

PARENT ORIENTATION



HAND IN HAND
CHRISTIAN MONTESSORI

MONTESSORI METHOD

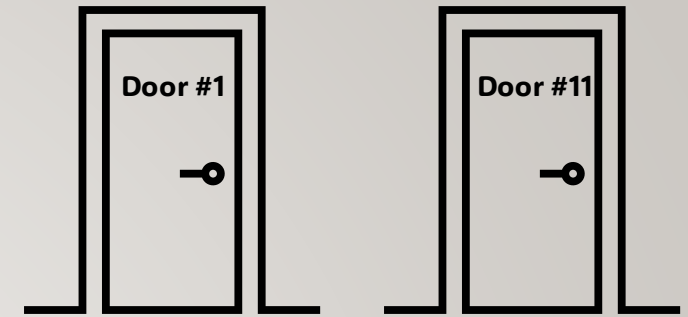
1. Faith
2. Language
3. Mathematics/Geometry
4. History/Geography
5. Science

Dr. Maria Montessori

Italian physician, educator, and innovator, acclaimed for her educational method that builds on the way children naturally learn.



BEFORE & AFTER SCHOOL CARE



Drop - Off

- 7:30 – 8:15 AM
- Curbside drop-off is not available.
- Using access code, enter in door 1 (Casa) or 11 (Elementary)
- Drop child off and checked in with the before school support staff
- Support staff will assist children in going to their classroom
- Available to those who are enrolled in that program
- Drop-in Care: available for emergencies for an additional fee (Elementary)

Pick - Up

- 3:30 - 5:30 pm
- Curbside pick-up is not available.
- Using access code, enter in door 1 (Casa) or 11 (Elementary)
- In Casa: the children may be playing the following area: outside or in the Casa commons
- In elementary: the children may be playing the following area: outside, in the gym, or in lunchroom
- ensure children take all of their belonging when they are picked-up
- Ensure the child is check-out with the afterschool support staff
- Drop-in Care: available for emergencies for an additional fee (Elementary)

SCHOOL DAY DROP-OFF & PICK-UP

Drop - Off

- Arrival between 8:15 & 8:30
- School Starts at 8:30
- Curbside drop-off is between:8:15-8:30
 - Use the drop-off lane from 8:15-8:30
 - School staff will assist Preschool and older children into the building and to their classrooms

Pick - Up

- Dismissal 3:15
- Pick up between 3:15 – 3:30
- Curbside drop-off is between:
 - Use the drop-off lane from 3:15 – 3:30
 - Show your family number in the car window
 - School staff will assist Preschool and older children to the cars
 - Please pull forward to ensure and ensure your children are buckled

CURBSIDE GUIDELINES

- Safety is our #1 Concern
- Please park at the designated area
- Parents stay in car unless directed
- Children must stay in car until the car is parked in the designated area
- Pull forward when possible
- No children may exit the car until the vehicle is parked in the designated area.



ABSENCES & ALTERNATIVES

Planned Absences

- Email the teacher to notify them of planned times away from class

Unplanned Absences

- Call the office to notify of absence

Mid-day Pick-up

- If able notify the teacher and office via email in advance
- Stop in the office to sign-out your child
- Office staff will bring your child up to the front office for you

Late Arrival

- Student will check in at the office
- Office staff will ensure the child arrives in class

COMMUNICATION



Teacher Communication

- School Email
- Phone Conference
- In-person Conference
 - Before or after school by appointment
 - Designated conference days
- Weekly Newsletter: Handle



Leadership Communication

- School Email
- Phone Call
- In-person Meeting by appointment
- Weekly SNAP



ALLERGIES, FOOD SENSITIVITIES, HEALTH NEEDS

Allergy, Health Need, Illness

- If your child has a known allergy or health need contact the school nurse. She will assist in making a health plan for your child at school.
- Sick? Contact the school nurse and she will help to advise you.

Peanut Policy



- NIDO – Kindergarten is peanut free. Please keep the nuts at home!
- Dining hall for 1st – 8th grade has a peanut free table.

School Nurse

- Amanda King
- a.king@hihcm.org

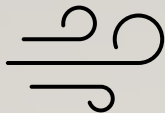
Emergency Contacts

- Keep emergency contacts up to date
- Designate useful emergency contacts
 - Within 20 minutes and available
 - Aware they are listed



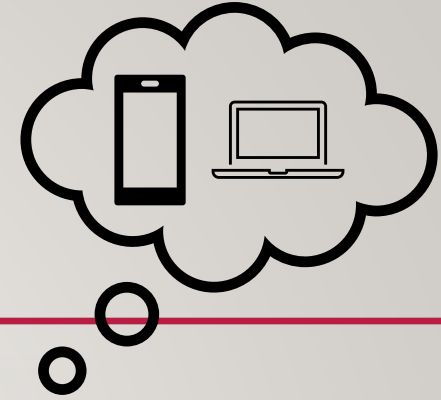
WEATHER RELATED CLOSURES & DELAYS

Inclement Weather



- Safety of students, families, and staff is our top priority.
- Determining delays and closures:
 - HIHCM also considers local public-school changes in programming that are due to inclement weather.
 - HIHCM consults the National Weather Service (NWS) for the most up to date weather forecast.
 - The Campus Director will decide whether to have a full closure or more commonly a late start/early closure based on predicted inclement weather.
- Closure: In the event of a closure all programming will be cancelled, including before and after school programs.
- Changes in programming is communicated via:
 - Student Alert (text message)
 - Local News Station: WCCO
 - All-school email blast

ELECTRONICS



Personal Devices

- Children are encouraged to keep personal electronics at home
 - Including: cell phones, smart watches, gaming devices
- Student use of personal electronic devices is prohibited in the school building
- Personal electronics brought to school will be stored safely stored in a basket in the classroom and will be distributed at the end of the day
- Personal devices are not allowed in before or aftercare
- The school's phone is available for communication needs

School Computers

- School provided Chromebooks are used for educational purposes only
- Children have teacher support and supervision while using computers
- Children are always encouraged to use the classroom resources first
- All school computers are equipped with a high firewall for protection
- CREO (7th & 8th grade) is suggested to bring in their own computer or Chromebook for educational use only

PARENT ENGAGEMENT



COFFEE CONNECT

Coffee Connect is a parent support and education group meant to encourage and strengthen the parent community at Hand in Hand. We have time to enjoy coffee, discuss the topic of the session, and share the joys & struggles we're experiencing on this journey. Topics often have a homeschool focus, but all HIH parents are absolutely welcome!

Please join us on the following

Wednesdays from 8:40 - 10:00am

Save the Date: October 4, October
18, November 1, November 15, November 29, December
13

Questions? Please contact Michelle Check (parent volunteer) at
michelle.check@gmail.com

Collaboration is one of the

three cornerstones of education
at Hand in Hand. As Hand in Hand's
theme song reminds us that

"together we learn better."

Taking time to connect with other families
from Hand in Hand strengthens our school
community, homeschools and
families. Consider these
opportunities to
connect in the
coming school
year...

Connect
Hand in Hand
Highcroft
Families
2023-2024

Parents are
invited to this
monthly
educational
gathering to
connect with other
parents, find support, and
learn from seasoned mentors in a
wide variety of topics. Discussion, snacks,
and time for prayer.

Meets monthly on WEDNESDAYS in the
Highcroft Parent Ed Room from 8:45-

Contact: Michelle Check at
michelle.check@gmail.com

*Limited Childcare Available by RSVP j.schmidt@hihcm.org



COFFEE CONNECT

MOMS CIRCLE CONNECT



For HIH moms to build community in
small groups, grow as Christian
women through soul care, and unite
in prayer for our school.
Meets at the **Central Campus**, 1st Wed. of
ea. month, Gathering Rm, 8:45-10:30am

*Childcare available by RSVP @
myhihcommunity@gmail.com

MOMS MENTORING

Need encouragement in
marriage, parenting, or
your faith journey? Contact
j.schmidt@hihcm.org for a
mentoring session.

Interested in being a
sewing or art helper, or a
reading buddy? Maybe you'd
rather help at special events or as a
Room Parent? However you'd like to
use your time, talents, or treasures,
we'll help you find your niche. Contact
j.schmidt@hihcm.org for more details.

CONNECT Through VOLUNTEERING



Need prayer support or have a praise report?
Email prayer@hihcm.org
Connect via a live Microsoft Teams weekly meeting
Contact j.schmidt@hihcm.org for a schedule/invite

PRAYER CONNECT

Questions about how to connect or volunteer at HIH, please contact Jean Schmidt,
Director of Christian Montessori Family Education at j.schmidt@hihcm.org

THANK YOU FOR
COMING!



HAND IN HAND
CHRISTIAN MONTESSORI